

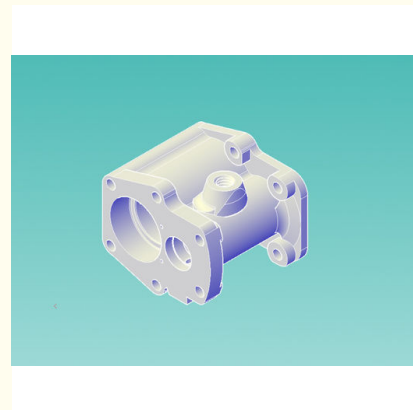


## 336/50 Hydraulic Housing(lower)

Our Product Introduction

### Basic Information

- Place of Origin: Shanghai
- Brand Name: YIKU
- Model Number: OGA1711
- Minimum Order Quantity: 1 piece
- Price: negotiable
- Packaging Details: box
- Delivery Time: 2-3 weeks
- Payment Terms: L/C, T/T
- Supply Ability: 10 units/month



### Product Specification

- Name: Housing
- Model: OGA1711
- Material: QT40-5
- Weight : 1.6kg
- Purpose: Lower Housing
- Applicable To: 336/50 Hydraulic Cylinder

for more products please visit us on [axialfanparts.com](http://axialfanparts.com)

## Product Description

336/50 Hydraulic Housing(lower)

液缸部件

活塞杆, 杆——接控制芯一起是液缸的血管和心部位.

向体——控制液活塞左右, 指示机操作, 便于察全和全.

液体——液的指腔室, 控制油, 回油, 左右方向, 指全或全.

接法——便于固定在机支体上, 利用缸体来回推, 杆叶片全全.

Hydraulic cylinder component

Piston rod, toothed rod - Connecting the control spool group together are the blood vessels and heart parts of the hydraulic cylinder.

Guide housing - control the hydraulic piston left and right movement, drive the indicating mechanism operation, easy to observe the full open and close.

Hydraulic shell - hydraulic transmission command chamber, control oil inlet, oil return, left and right direction, command full open or full close.

Connecting flange - easy to fix on the fan support body, using the cylinder block to adjust the push disk, the adjustment rod to drive the blade fully open and close.



Shanghai YIKU Power Equipment Co., Ltd



8613916002258



657925203@qq.com



[axialfanparts.com](http://axialfanparts.com)

5587 Dongchuan Road, Pudong New Area, Shanghai