

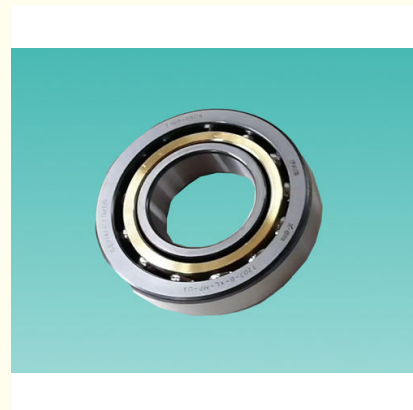


Axial Fan Components Angular Contact Ball Bearing 30mm-70mm ID7206 7207 7208 7209

Our Product Introduction

Basic Information

- Place of Origin: Shanghai
- Brand Name: YIKU
- Model Number: 7 Series
- Minimum Order Quantity: 1 piece
- Price: negotiable
- Packaging Details: box
- Delivery Time: 2-3month
- Payment Terms: L/C, T/T
- Supply Ability: 100 piece/month



Product Specification

- Name: Angular Contact Ball Bearing
- Model: 7 Series
- Material: Bearing Steel
- Quantity: 1
- Purpose: Guidance
- Applicable To: Petiole Sleeve
- Highlight: **Angular Contact Ball Bearing 30mm,
Angular Contact Ball Bearing 70mm**

for more products please visit us on axialfanparts.com

Product Description

angular contact ball bearing 7206 7207 7208 7209 7210 7211 7212 7214

Model	ID	OD	Thickness
	(mm)	(mm)	(mm)
7206	30	62	16
7207	35	72	17
7208	40	80	18
7209	45	85	19
7210	50	90	20
7211	55	100	21
7212	60	110	22
7214	70	125	24

承由外圈,内圈, 体和保持架四部分 成.角接触 承 限 速 高,可以同 同 承受径向 荷和 向 荷,也可以承受 向 荷,其 向 荷能力由接触角决定,并随接触角 大而 大. 列角接触球 承只能承受一个方向的 向 荷,在承受径向 荷 ,会引起附加 向力,必 施向相 的反向 荷,因此, 承一般都成 使用. 承 坏及超 使用小 ,必 更 .

The rolling bearing is composed of four parts: outer ring, inner ring, rolling body and cage. The angular contact bearing can bear radial load and axial load at the same time, and can also bear pure axial load. Its axial load capacity is determined by the contact Angle and increases with the increase of the contact Angle. Single row angular contact ball bearings can only withstand one direction of the axial load, in the radial load, will cause additional axial force, must apply the corresponding reverse load, therefore, this kind of bearings are generally used in pairs. Bearings damaged and more than hours of use, must be replaced.



Shanghai YIKU Power Equipment Co., Ltd



8613916002258



657925203@qq.com



axialfanparts.com

5587 Dongchuan Road, Pudong New Area, Shanghai